

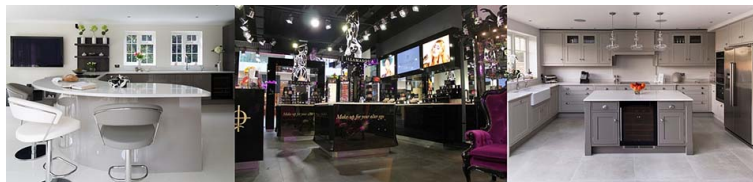
Parapan (Landau Parapan)

Parapan
high gloss acrylic

Landau House, Bontoft Avenue, Hull, East Yorkshire, HU5 4HF
www.parapan.co.uk
Gareth Atkin, Tel: +44 (0)1482 440680, gareth@landau.uk.com

CPD Overview

Landau Parapan, has been a leading name in the design, manufacture and supply of unique and innovative products for commercial and home interiors for 30 years. Parapan, high gloss solid acrylic sought by architects and designers for use across a variety of unusual and imaginative commercial and retail applications. Available in 18mm and 4mm thicknesses. The versatile material can be used for cladding, panelling, doors, drawers, fascias and cabinetry. It is extremely workable and can be thermoformed into bespoke curves, available in 17 standard high gloss and two matt colours. Landau offers three additional kitchen collections, including Brooklands, a traditional in-frame style available in 24 standard colours and two choices of frame type combined with a classic butt hinge in three finishes, and Natures Choice a selection of lay-on door styles. Both these ranges are available in bespoke sizes and curved solutions and can be finished to a specified stain or paint finish. To complement both ranges, oak drawer boxes and cutlery trays are available. The third collection is V-Line, a selection of 18 exotic veneers, chosen for vibrant colour, character and texture and can be grain matched both horizontally and vertically, with curves also available.



Available CPD Material (1)



High Gloss Acrylic Doors and Panels

This seminar will provide information on:

- What is high gloss solid acrylic
- How acrylic is made
- How doors and panels are made and fixed, including curves
- The material's features and benefits
- Application examples

Material type:

Seminar

RIBA Core Curriculum:

Designing and building it: design, construction, technology and engineering

Knowledge level:

General Awareness

Classifications

Subject/Product Areas (CI/SfB)

Structure

Doors: general > Side-hung doors - plastics

Finishes

Wall finishes: internal > Plastics internal wall finishes

RIBA Core Curriculum areas

Designing and building it: design, construction, technology and engineering

Knowledge level: *General Awareness*